

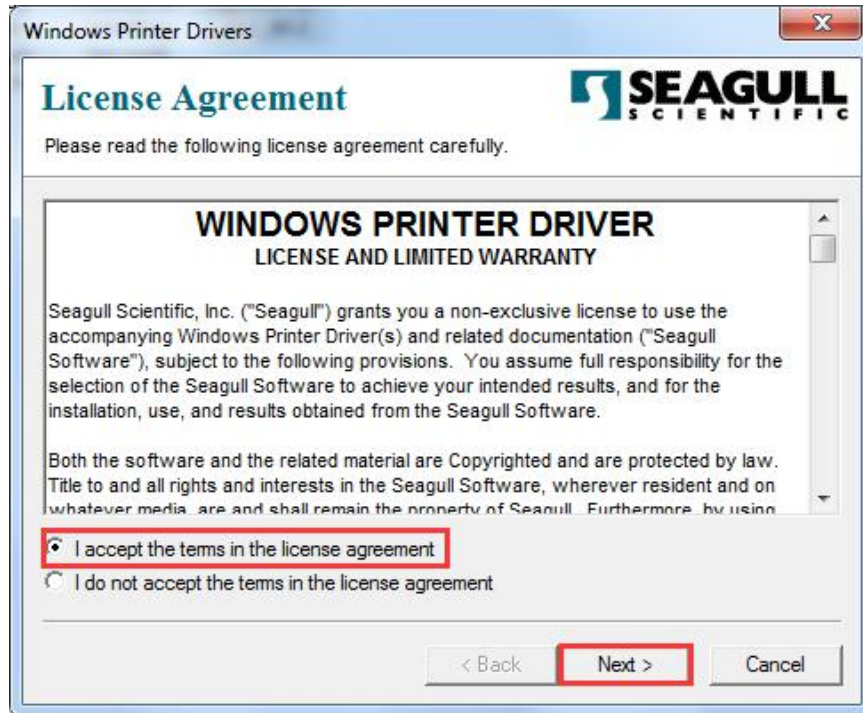
# Process of installing bar code driver

1. double click,

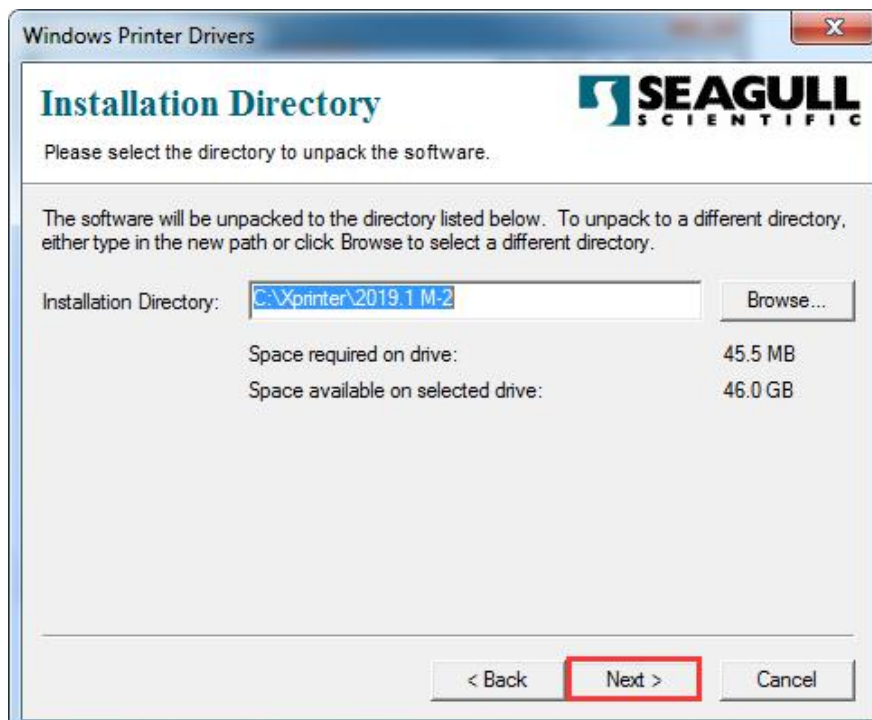


and choose “I accept the terms in the license agreement”, click

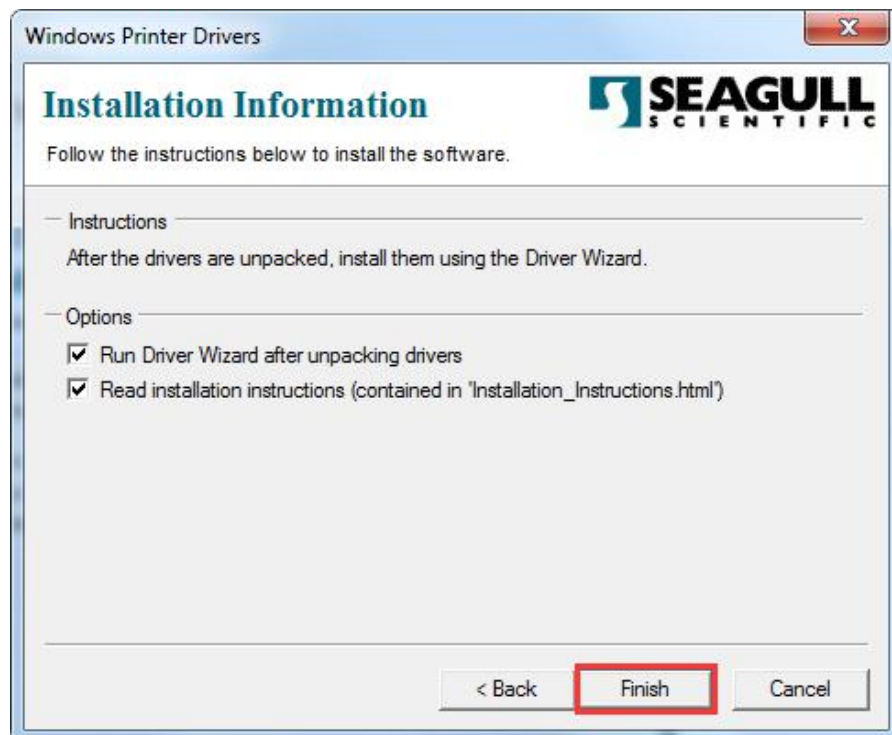
“Next” , as below picture:



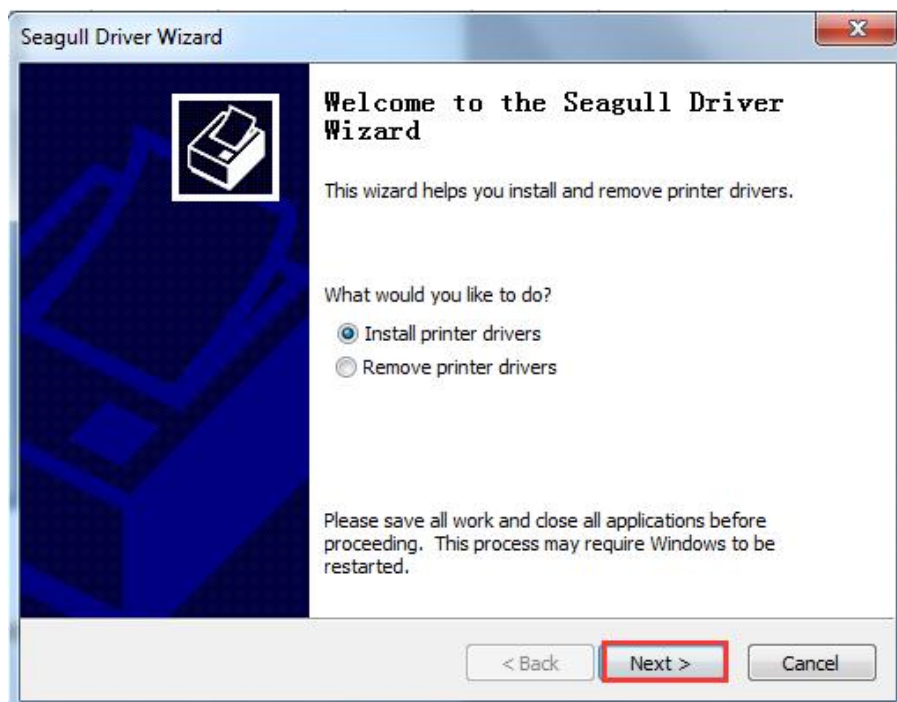
2. leave “Installation Directory” as default, go “Next” :



3. Choose “Run Driver Wizard after unpacking drivers” and go “Next” .

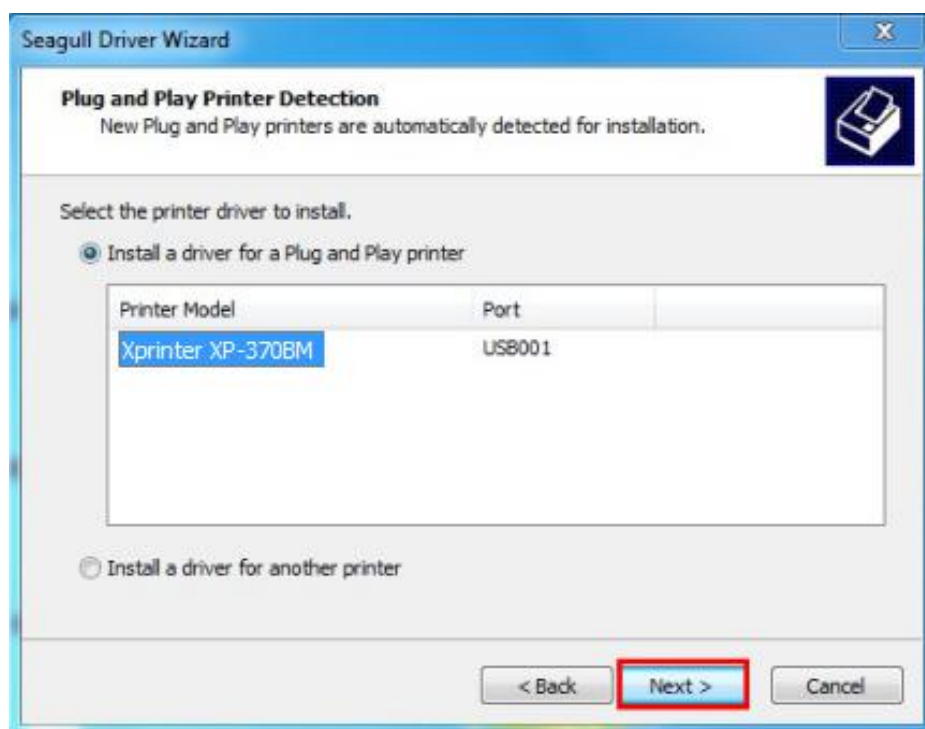
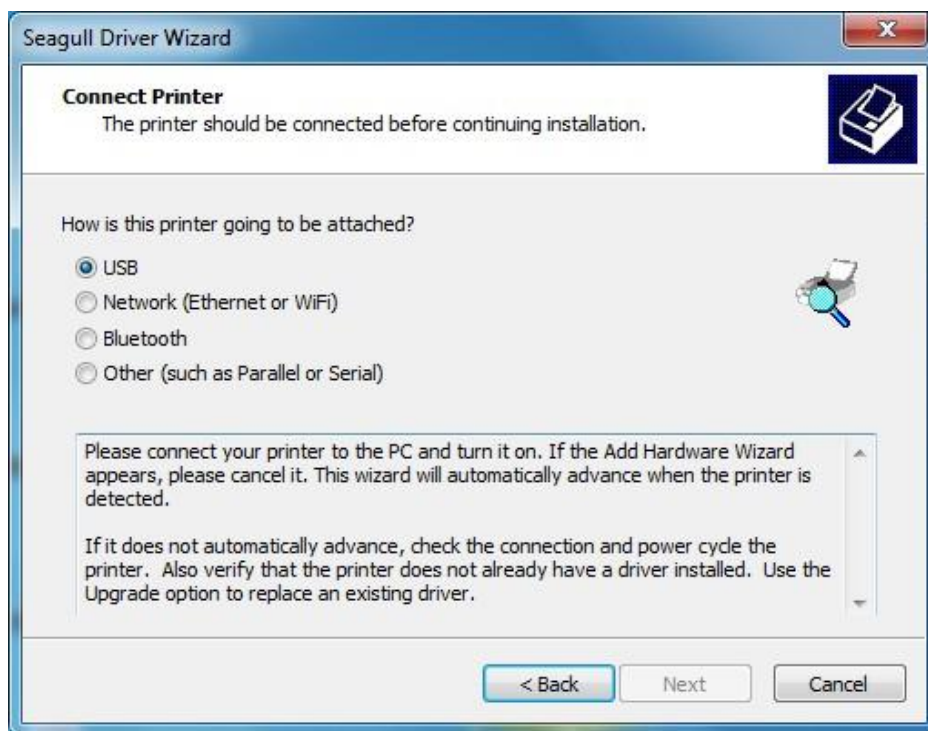


4. Choose “Install printer drivers” , click” Next” , as below picture:

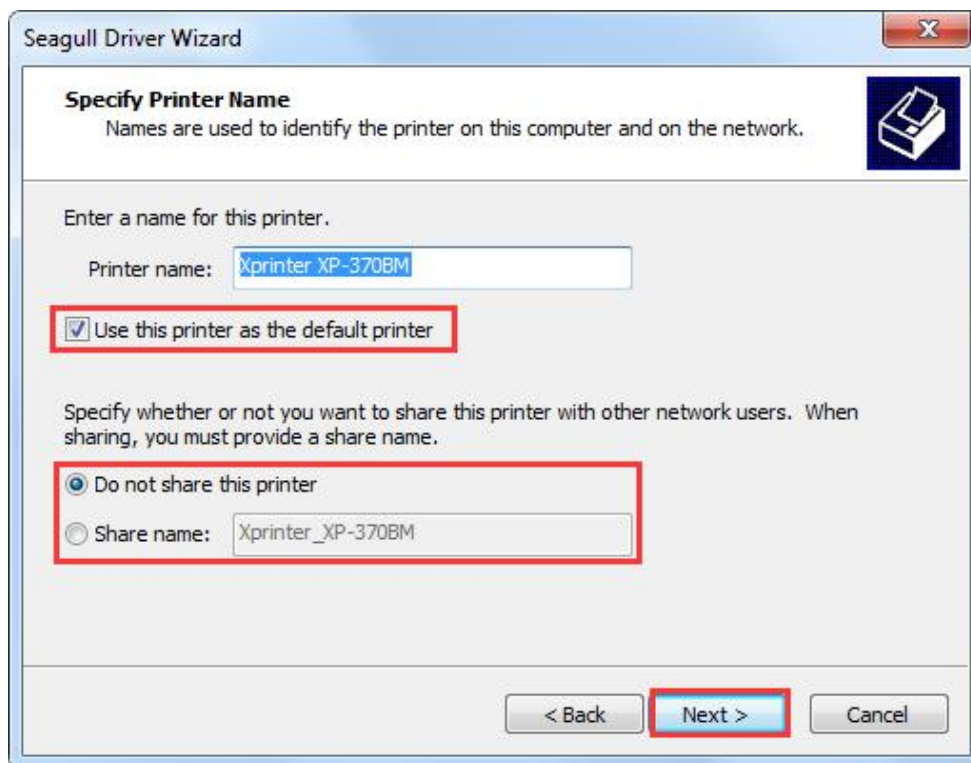


5. After installing the printer drivers , the printer automatic detects the communication USB port. go “Next” :

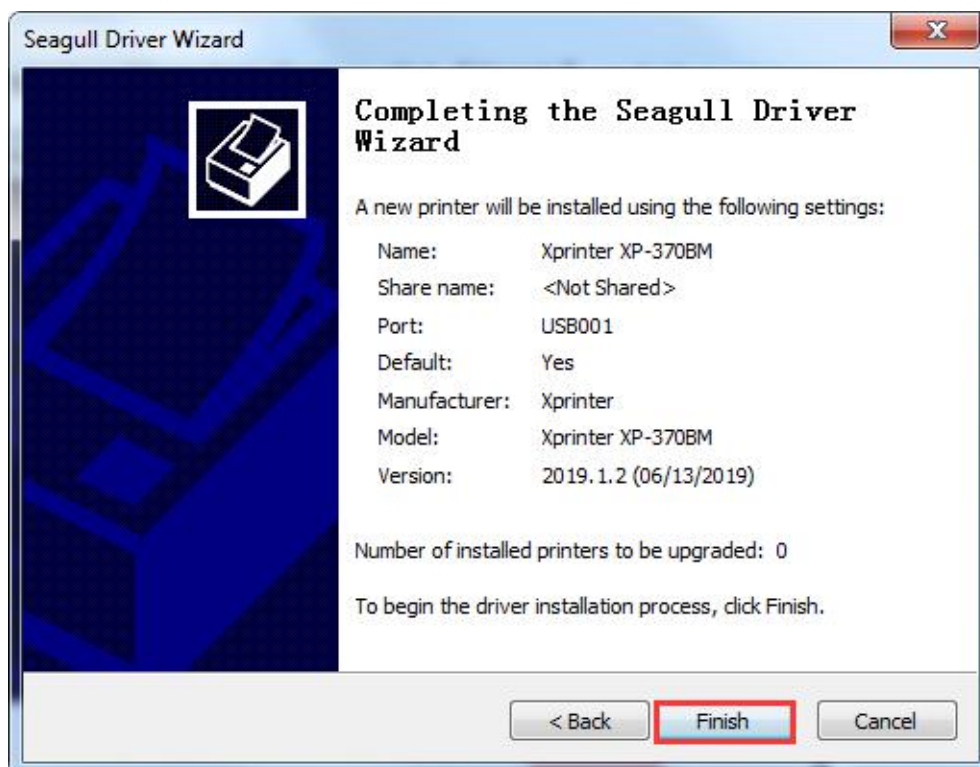
PS: No need to set port in driver if the program detected the communication port in this step.

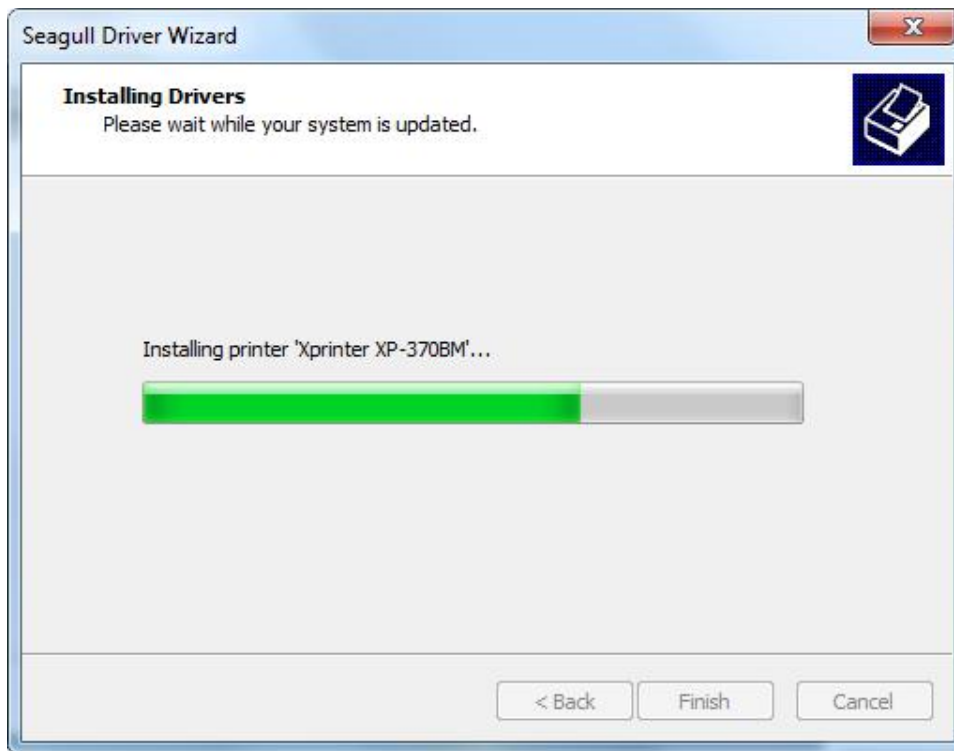


6. Default name of printer is “Xprinter XP-370BM” , Choose “Use this printer as the default printer” , click “Next” , as below picture:

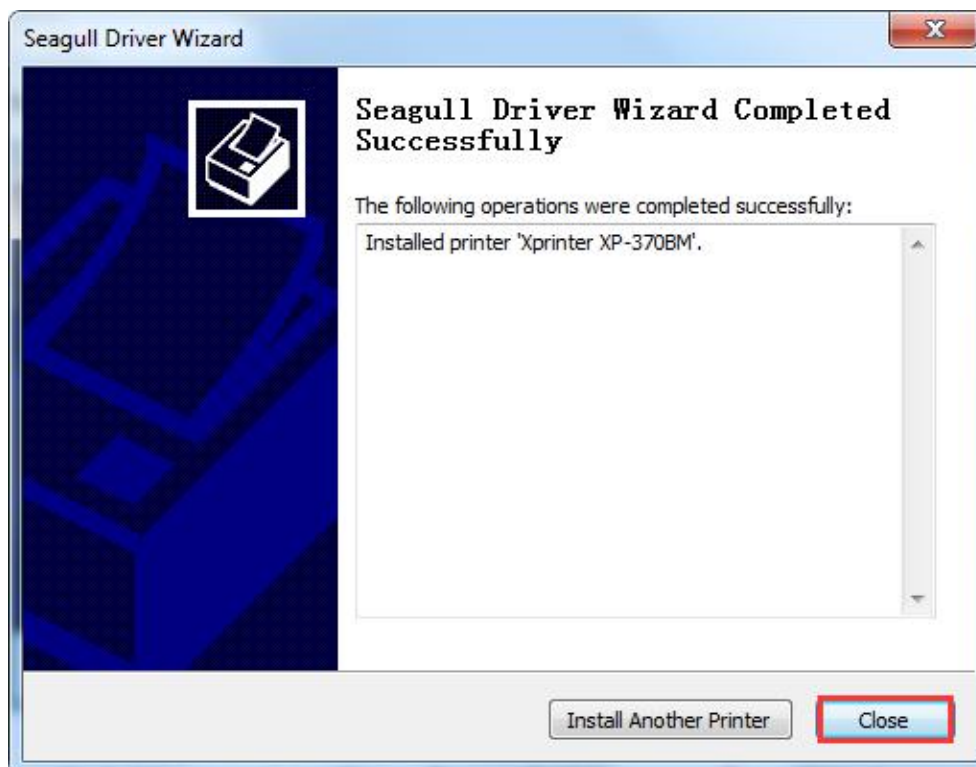


7. Completing driver installation, click “Finish” ,as below picture:



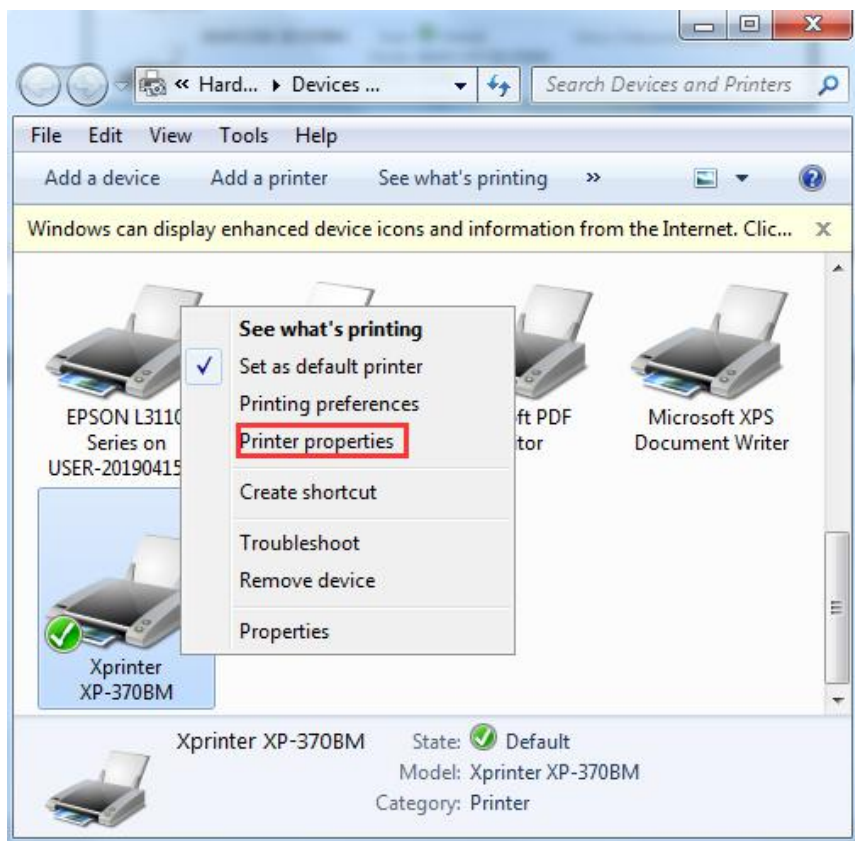
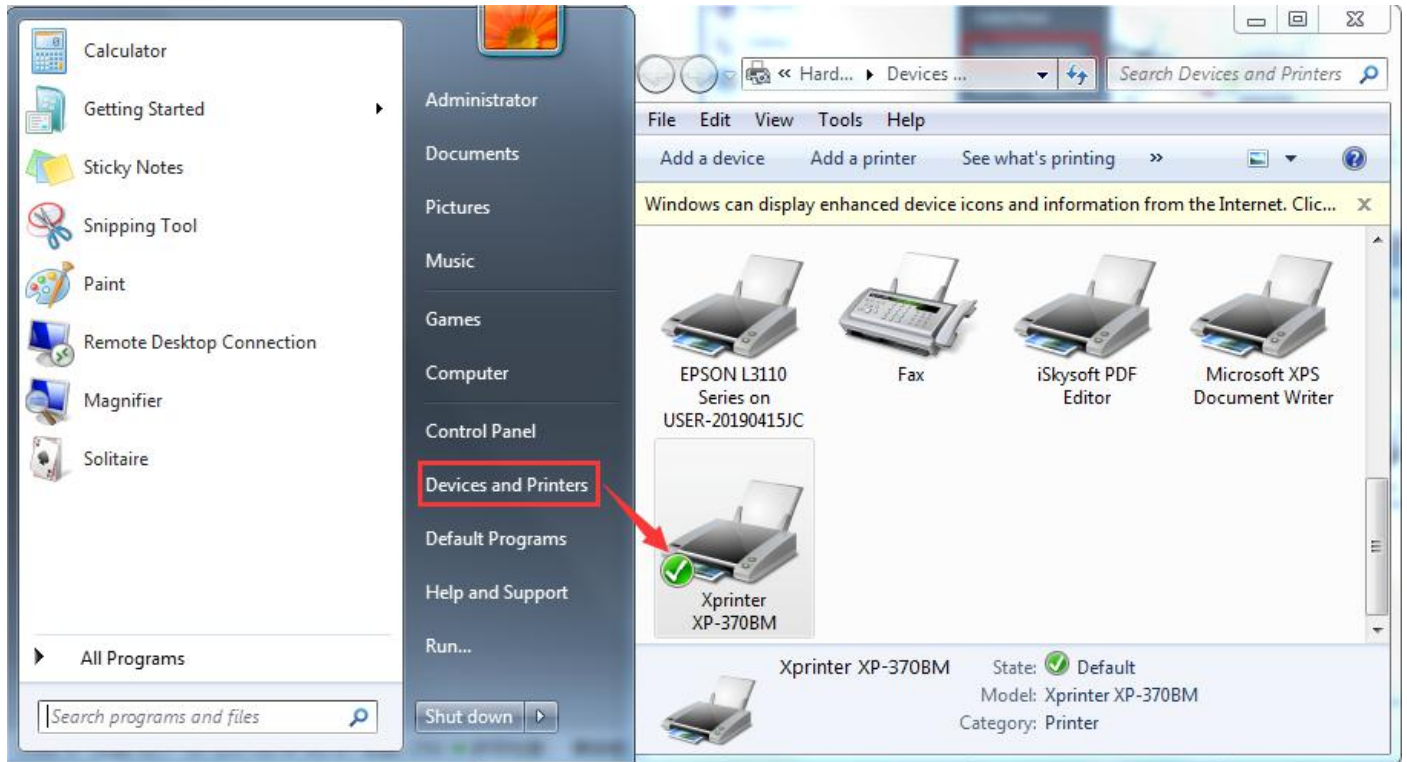


8. Complete the installation of driver “Xprinter XP-370BM” , click “Close” , As below picture:

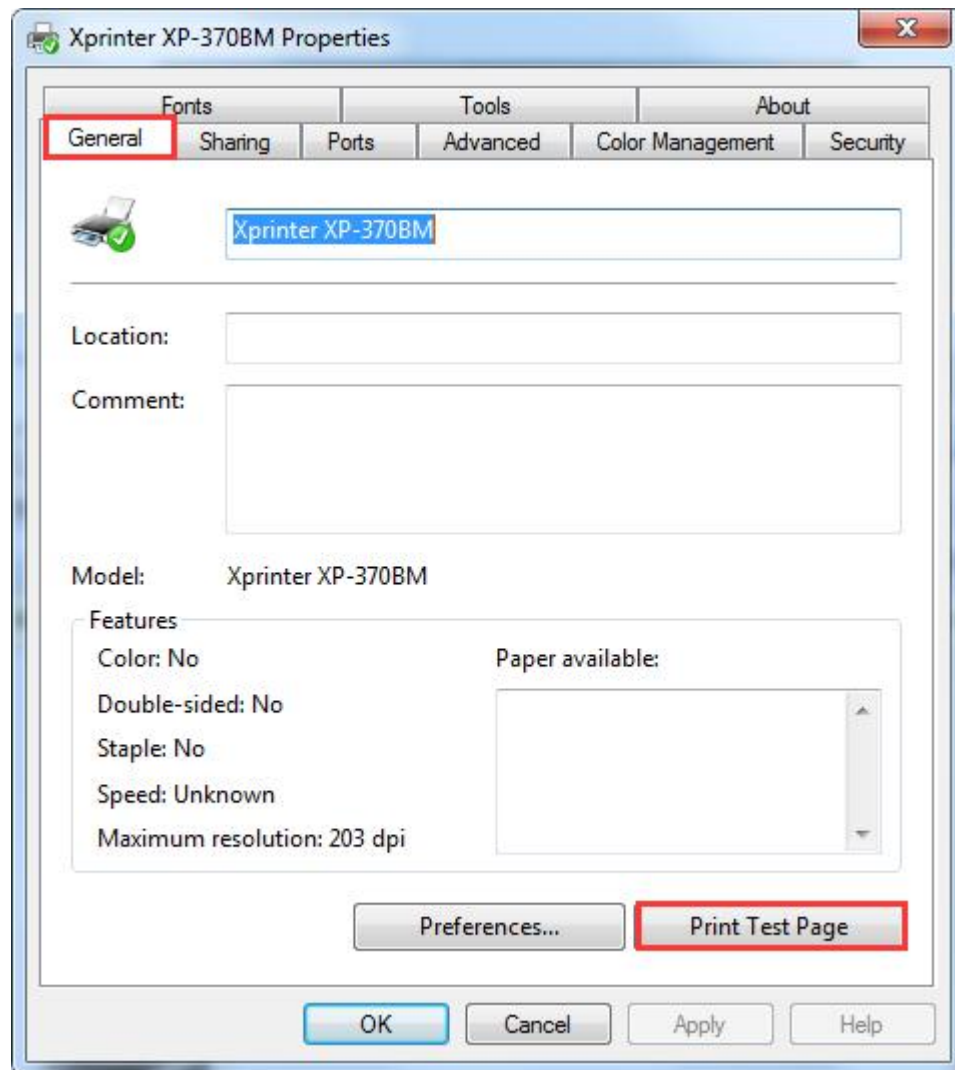




9. After installed drivers, click “Start” → “All Programs” → “Devices and printers” , find “Xprinter XP-370BM” , Choose this icon, right click , “printer properties” , as below pictures:



10. After the above steps are completed, click “general” → “print test page” 。



**The drive has been installed successfully when test page is printed. Thanks for your support**