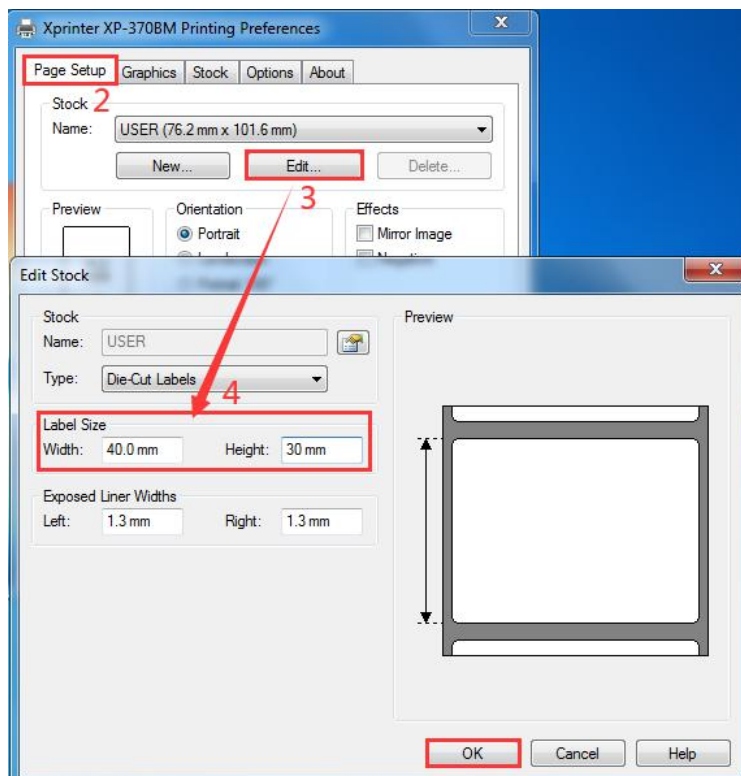
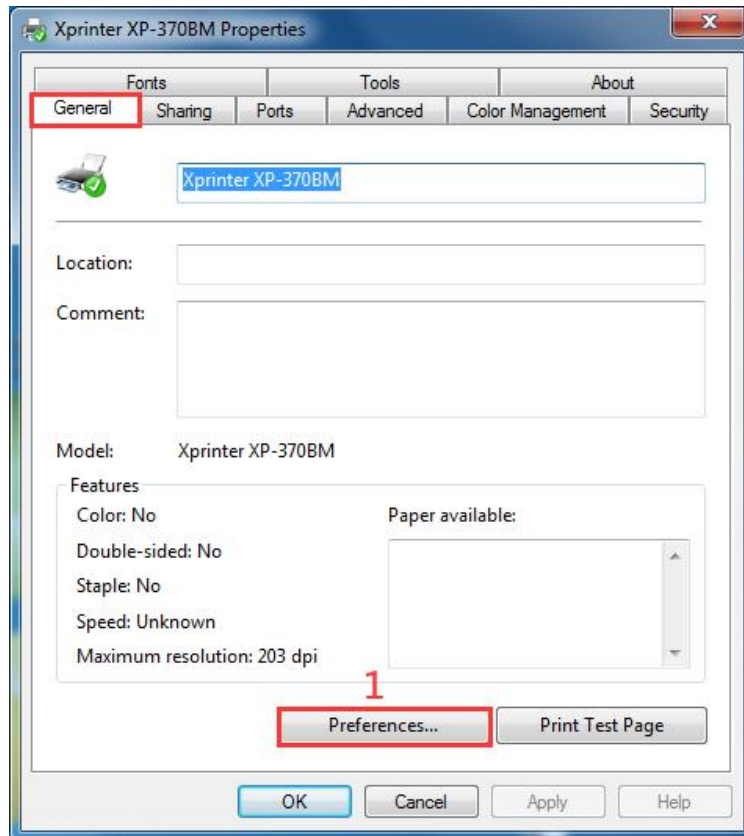


Setup instruction of Barcode driver

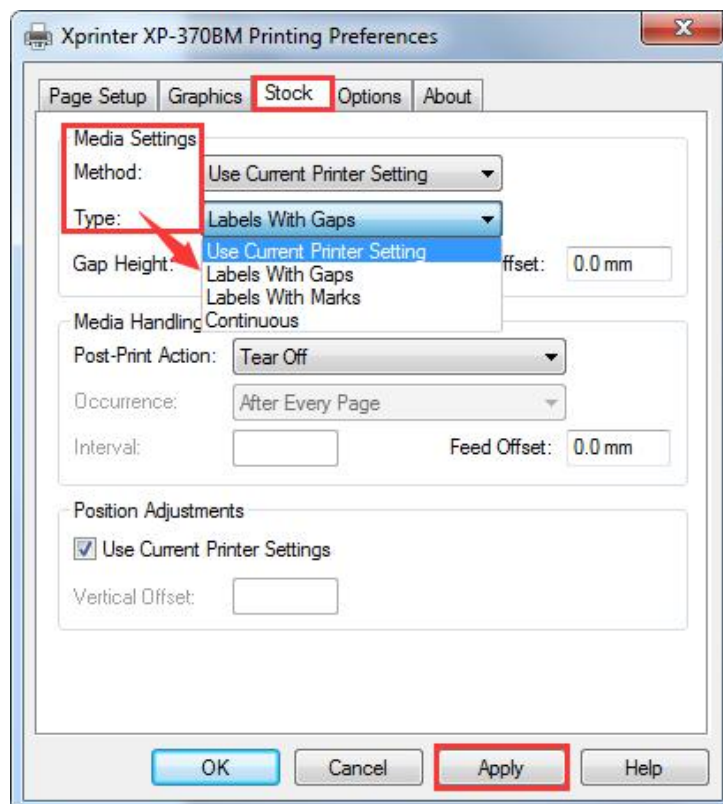
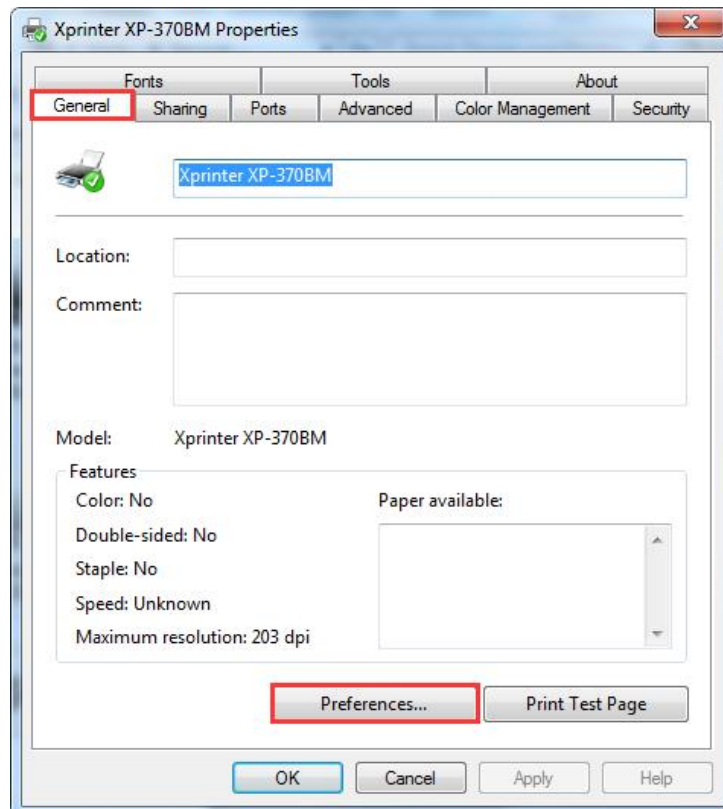
1. Please refer below steps for page setup:

General → “Preferences” → “Page Setup” → Click “Edit” to adjust the Label Size (Width/ Height)



2. Please refer below steps for “stock” setup:

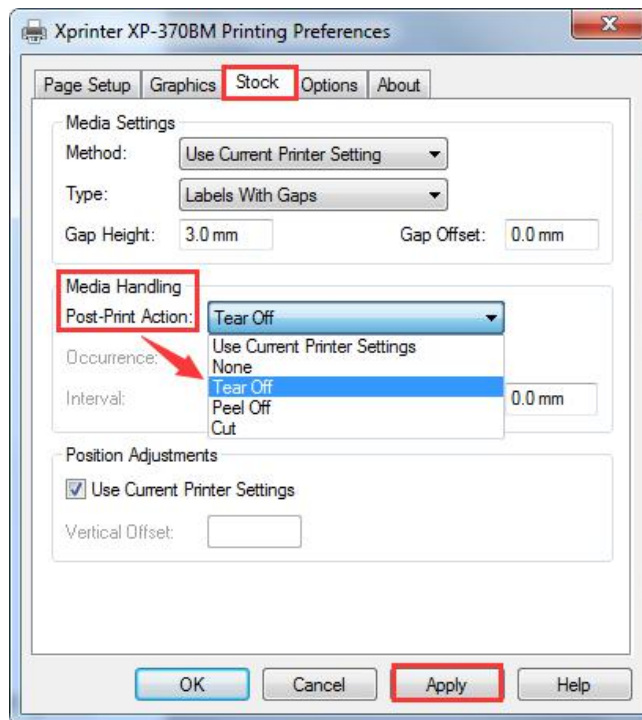
General → “Preferences” → “Stock” → (Media Settings) Select the paper type, as follows:



3. “Stock” →Media Handling (Post-Print Action: choose “Tear off”)

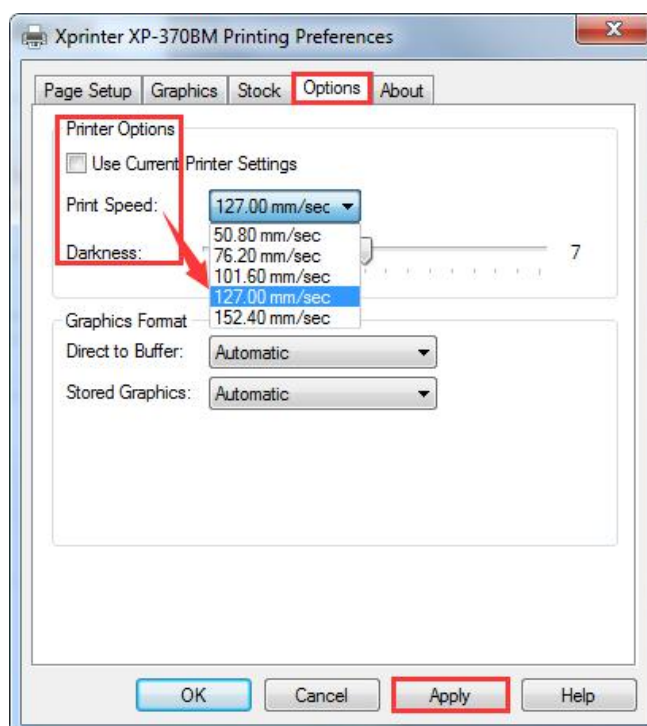
Tear Off: Can continuously print, tear off paper directly.

Peel Off: Print paper one by one, different loading paper.



4. Click “Options” → “Printer options ” to set Print Speed /Darkness , 5 grades of print speed

supported: 50.8mm/s; 76.2mm/s; 101.6mm/s; 127mm/s; 152.4mm/s, The default print speed is 127mm/s, The default darkness is 7, it has 1-15 grades。



5. “Stock” →Media Settings (Type: choose “Label With Gaps” , Gap Height: 2.0mm)

Gap height means the gap height between labels.

